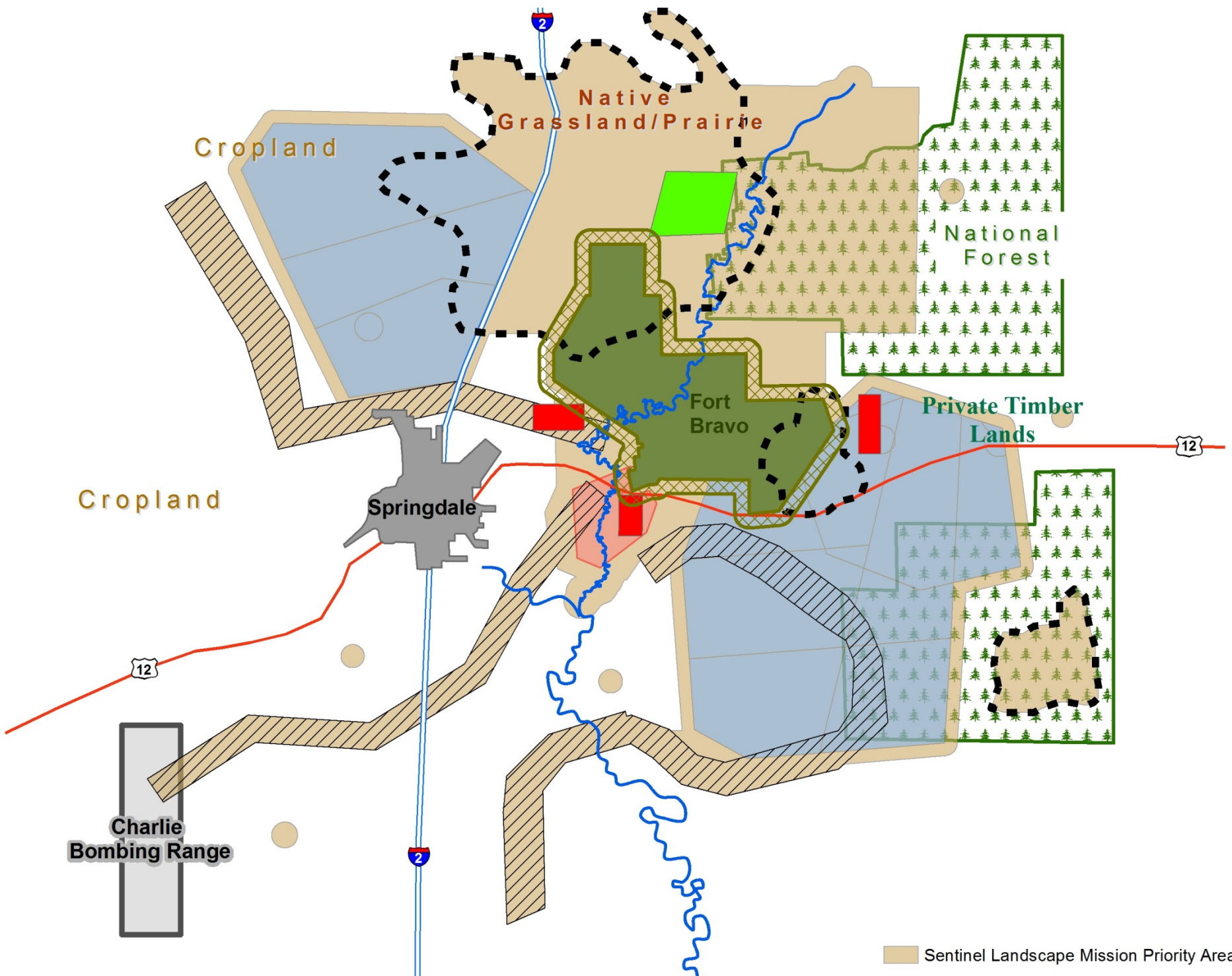
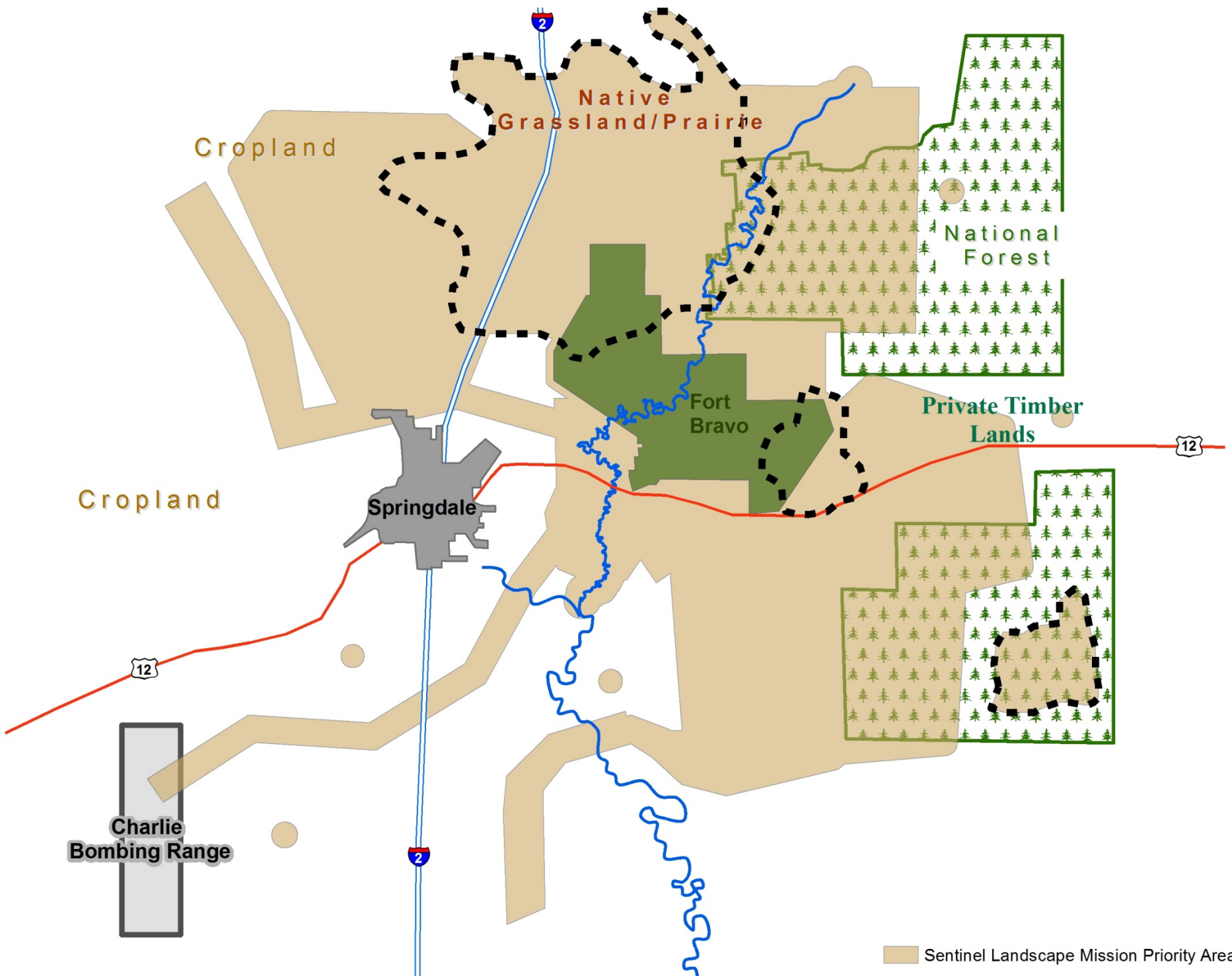


- REPI Challenge
- Military Training Routes
- 3 mile REPI Buffer
- REPI Buffer
- DoD Species of Concern Habitat
- Low Altitude SUAS**
- MOA
- Restricted





# Sentinel Landscapes

**Sentinel Landscapes** are working or natural lands important to the Nation's defense mission – places where preserving the working and rural character of key landscapes strengthens farms, ranches, and forests economically; conserves habitat and natural resources; and protects vital test and training missions conducted on those military installations that anchor such landscapes.

## Sentinel Landscape Attributes:

- “Anchored” by military installation
- Relevant (defined) landscape possessing intrinsic link to military mission and specific mission requirements, e.g. buffer land, parcels underlying low level MTR, important T&E habitat, critical watershed protecting water quality/quantity
- Attract partner participation due to shared mission interests, recognized value of military mission (patriotism, jobs and economic value), and monetary incentives
- REPI/REPI Challenge is the principal DoD contribution to a Sentinel Landscape; DoD brings REPI funding to Sentinel Landscapes as part of the broader, comprehensive, multi-tool approach that in turn attracts other partner involvement and investment

# Sentinel Landscapes

## Sentinel Landscapes Partnership (SLP) and Federal MOU

**Purpose:** plan and execute mutually beneficial programs, projects, activities, and strategies to: preserve, enhance, or protect habitat, working lands, and associated agricultural and forest production in the vicinity of military installations; reduce, prevent, or eliminate restrictions that inhibit military testing and training; and forestall incompatible development in the vicinity of installations.

- **Focuses Federal Attention**
- **Optimizes delivery of Federal programs to landowners**
- **Attracts State and private capital interest and investment**
- SLP “delivers” Federal programs to optimize the benefits of Federal assistance to landowners whose working and natural lands also serve to protect the military mission, e.g.
  - REPI/REPI Challenge (DoD)
  - Advancing Regulatory Certainty under ESA (USFWS)
  - Regional Conservation Partnership Program (NRCS)
  - Working Lands for Wildlife (NRCS)
  - Forest Legacy (USDA Forest Service)



# Sentinel Landscapes Way Forward and Key Actions

## Initiate – Demonstrate – Operationalize

- **Initiate (July 2013)** Key Actions:

- JBLM July announcement; and
- DC Joint USDA/DoD/Interior Roll-out event.

- **Demonstrate (Fall 2013/2014)** Key Actions:

- Completed:**

- Joint DoD/USDA/DOI Sentinel Landscape MOU signed Dec 13, 2014; Sentinel Landscapes Federal Coordinating Committee established;
- Sentinel Landscapes Workshop and inaugural meeting of Sentinel Landscapes Federal Coordinating Committee (SL-FCC) – February 11-12, 2014, Washington DC
- Focused SL-FCC review of 2014 REPI Challenge proposals (March – May)

# Sentinel Landscapes Way Forward and Key Actions

## Initiate – Demonstrate – Operationalize

- **Demonstrate (Summer/Fall 2014)** Key Actions:

### **Pending:**

- Award of 2014 REPI Challenge funding (July)
- Further evaluation of 2014 REPI Challenge proposals and other high potential projects, including overlap of RCPP opportunities (summer/fall 2014)
- National Conference of State Legislatures (NCSL) Annual Legislative Summit – Minneapolis, MN; NCSL will convene a joint meeting of its Task Force Military and Veterans Affairs and Task Force on Agriculture to focus on Sentinel Landscapes (August 2014)
- National Workshop on Large Landscape Conservation – Washington, DC October 2014, Sentinel Landscapes panel and “commissioned paper”

# Sentinel Landscapes Way Forward and Key Actions

## Initiate – Demonstrate – Operationalize

- **Demonstrate (Fall 2014/Spring 2015) Key Actions:**

### **Pending:**

- State Engagement Demonstrations – Targeted demonstration of a comprehensive compatible land use strategy. Select demonstration opportunities based on 1) expressed interest from military service and installation, 2) evidence of existing activities and engagement, 3) record of success in on-going efforts and support from stakeholder community (likelihood of success), 4) consistent with REPI Challenge criteria and Sentinel Landscape Partnership objectives.